



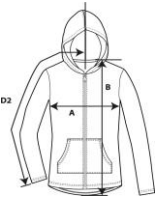
**6759L - NEW!**



**Women's Tri-Blend Full-Zip Hooded Jacket**

**DETAILS**

<b>Weight</b>	159.0 G/SqM
<b>Content</b>	50% Polyester, 25% Combed Ring Spun Cotton, 25% Rayon
<b>Features</b>	Fabric 30/1 High stitch density for smoother printing surface Unlined hood Semi-fitted contoured silhouette with side seam and display tape Contrast Charcoal metallic zipper Pouch pockets Twin-needle sleeve and curved bottom hem TearAway label Oeko-Tex® Standard 100 Certified
<b>Sizes</b>	XS-2XL
<b>Case Packs</b>	XS - 2XL 36 PIECES
<b>Colours</b>	6
<b>SKU's</b>	36



**SPECIFICATIONS**

	<b>Tol-</b>	<b>Tol+</b>	<b>XS</b>	<b>S</b>	<b>M</b>	<b>L</b>	<b>XL</b>	<b>2XL</b>
<b>Centimeters</b>								
<b>Chest (A)</b>	1.905	1.905	38.735	43.815	48.895	53.975	59.055	64.135
<b>Length from HPS (B)</b>	2.540	2.540	63.500	64.770	66.040	68.580	71.120	72.390
<b>Sleeve length (centre back) (D2)</b>	2.540	2.540	76.200	78.740	80.645	81.915	83.820	85.725
<b>Inches</b>								
<b>Chest (A)</b>	0.750	0.750	15.250	17.250	19.250	21.250	23.250	25.250
<b>Length from HPS (B)</b>	1.000	1.000	25.000	25.500	26.000	27.000	28.000	28.500
<b>Sleeve length (centre back) (D2)</b>	1.000	1.000	30.000	31.000	31.750	32.250	33.000	33.750

**XS-2XL**

<b>COLOURS</b>	Code
Black	036
Heather Blue	321
Heather Caribbean Blue	519
Heather Dark Grey	334
Heather Grey	346
Heather Red	234

**CHANGES**

<b>Additions</b>	Black, Heather Blue, Heather Caribbean Blue, Heather Dark Grey, Heather Grey Heather Red
------------------	---

Total Net Change 36 SKU's