

**ANVIL®**



**982**



**Adult Lightweight V-Neck Tee**

**DETAILS**

**Weight**  
**Content**  
**Yarn Count**  
**Features**

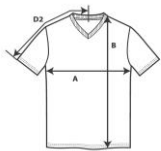
146.0 G/SqM  
100% Combed Ring Spun Cotton  
32/1  
High stitch density for smoother printing surface  
Semi-fitted  
Transitioning to side seam in 2019  
Shoulder-to-shoulder tape and seamed mitered v-neck collar  
Twin-needle sleeve and bottom hem  
TearAway label  
Oeko-Tex® Standard 100 Certified

**Sizes**  
**Case Packs**

S-2XL  
S - XL 72 PIECES  
2XL 36 PIECES

**Colours**  
**SKU's**

12  
60



22)

**Chest (A)**  
**Length from HPS (B)**  
**Sleeve length (centre back) (D2)**

	<b>Tol-</b>	<b>Tol+</b>	<b>S</b>	<b>M</b>	<b>L</b>	<b>XL</b>	<b>2XL</b>
	1.905	1.905	45.720	50.800	55.880	60.960	66.040
	2.540	2.540	69.850	73.025	75.565	78.105	81.280
	1.905	1.905	40.005	43.180	46.355	49.530	52.705
	<b>Tol-</b>	<b>Tol+</b>	<b>S</b>	<b>M</b>	<b>L</b>	<b>XL</b>	<b>2XL</b>
	0.750	0.750	18.000	20.000	22.000	24.000	26.000
	1.000	1.000	27.500	28.750	29.750	30.750	32.000
	0.750	0.750	15.750	17.000	18.250	19.500	20.750

**S-2XL**

**COLOURS**  
Black  
Charcoal  
City Green  
Heather Blue  
Heather Graphite  
Heather Grey  
Heather Navy  
Heather Purple  
Navy  
Red  
Smoke  
White

Code	Comments
036	
042	
303	
321	65% Polyester, 35% Ring Spun Cotton
780	50% Ring Spun Cotton, 50% Polyester
346	90% Ring Spun Cotton, 10% Polyester
170	65% Polyester, 35% Ring Spun Cotton
232	65% Polyester, 35% Ring Spun Cotton
032	
338	
342	
030	

**CHANGES**

Total Net Change 0 SKU's